

Tracker

from GE Digital

Increase throughput and accelerate time-to-market
in conveyor and assembly manufacturing



Production tracking & order execution management to optimize your manufacturing process and production orders. With installations spanning the world, Tracker from GE Digital, part of the Proficy family, is a comprehensive routing, tracking, and order execution management system that helps manufacturers raise productivity and cut costs by monitoring and managing the execution of production orders.



Complex production = automated routing and sequencing

Tracker is ideal for high volume, high variability, and high value operations



Accelerate your competitiveness



Increase Throughput

Launch new products faster. With Tracker, each serialized item that moves through your production or packaging process can be tracked.

Lean Production

With Order Execution Management, Tracker helps manufacturers and suppliers understand real-time sequence requirements—enabling manufacturers to build right the first time.

Standards for IoT interoperability

With Tracker, you can gain visibility across disparate, disconnected systems as well as a blueprint for manufacturing across enterprise-wide operations for a simpler, reusable manufacturing infrastructure.



Real-time flow management

Tracker provides the ability to not only track the real-time location of jobs on the production floor, but can be configured to perform routing logic on the movement of jobs throughout the facility.

Production Orders in Real Time

Better manage inventory, production orders, and routing materials with detailed data using Tracker. This software solution empowers your operators with real-time information and control of their operations to accommodate a variety of production flow adjustments.

- Improves the production of 65% of cars manufactured in North America
- 24% reduction in warranty costs with end-to-end genealogy at global appliance manufacturer
- 40,000+ users just in the automotive industry
- Build to Sequence rates of 99% for 400,000 vehicles per year at just one site



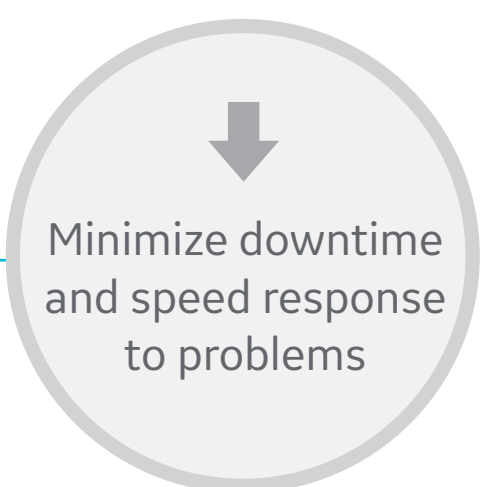
Introduce new products on time



Accommodate more kinds of products and options



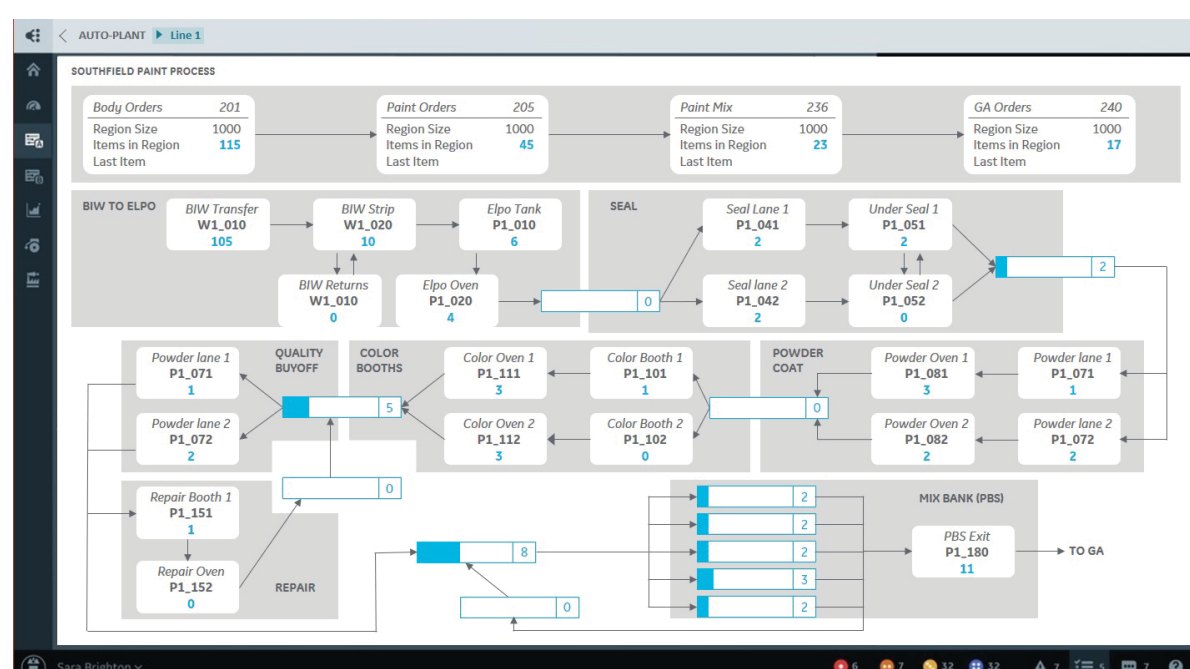
Decrease missed deliveries penalties



Minimize downtime and speed response to problems

About Tracker

Tracker automates routing and sequencing to accelerate time to market, reduce warranty and recall exposure, and support Lean operations and building right the first time. This proven solution collects genealogy and traceability data for audit trails and regulatory compliance. Other capabilities include WIP inventory control, defect containment, hold management, substitution management, sequence management, broadcast, and more. Additionally, Tracker coordinates across the supply chain to help meet production schedules.



Outcomes

- Increase throughput with detailed, continuous information to help you make the best decisions
- Enable faster time-to-market with powerful order execution
- Reduce risk including exposure to recalls
- Drive higher productivity and lower costs
- Leverage efficient scheduling and routing of materials
- Improve production performance with the ability to manage and adapt to real-time situations on a production floor
- Achieve Lean manufacturing and build right the first time

Features

New in Versions 11 and 11.1

- Multi-user development, accelerating configuration and deployment
- Ad hoc distributed queries
- SQL AlwaysOn support for high availability and disaster recovery for SQL Server
- Support for Windows Server 2019 and SQL 2019

Proven Production Tracking and Order Execution Management

- Routing and tracking
- Order management
- Broadcast
- Sequence management
- Substitution management
- Hold management and defect containment
- Collects data from many automated sensors and readers, including bar codes, RF tags, and mechanical tag systems
- Maintains detailed data for all jobs in the system, including content, status, location, and production process counts
- Provides routing control of production orders through the production facility
- Facilitates Build to Order / Build to Sequence
- Ensures building it right the first time
- Enables Lean manufacturing
- Collects genealogy and traceability data for audit trails and regulatory compliance
- Coordinates the supply chain
- WIP inventory control
- Finding critical jobs
- Meeting production schedules
- Manufacturing resource utilization

Find Out More



www.ge.com/digital

